

54BS509 Shiloh Brookings

CADENCE ET *TM

71130650 aAa: 156 Beta Cas: A1A2 Kappa Casein: BB
 Born: 1/15/2012

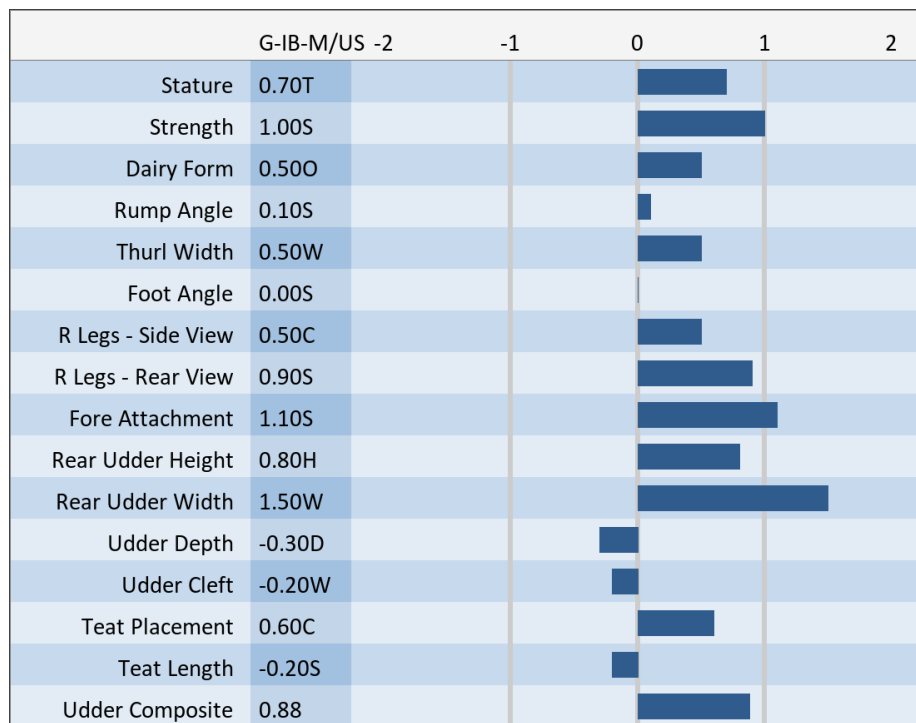
Proven Sires, Preferred Sex

#3 Type (Tied), #3 SCR, #PPR, #5 Protein, #5 Fat
BROOKINGS X WONDERMENT X ALTAPRANTO

08/2019 G-IB-M/US PERFORMANCE			
MILK +1058	FAT +39 / -0.02%	PROTEIN +39 / +0.02%	PPR 125
PROD. 98%R 1336 DTRS/651 HRDS TYPE 97%R			
PL +1.2	UDC +0.88	SCS 2.85	TYPE +1.10
Milking Speed 106		Conception (SCR) 3.4	
Cow Livability -2.3			
CE 4.5%	NM\$ \$305	DPR -2.3	MOB +0.2

MATING GUIDE	
+ Fore Udder	
+ Rear Udder Height & Width	
+ Udder Deth & Cleft	
+ Show Style	
Rear Legs- Some Set & Rump Angle- Slope	

Sire: R N R Payoff Brookings ET *TM
Dam: Sun-Made SD Wonder Buffy ET "VG-88"
 4-03 279d 3x 35,470 3.9 1,369 3.4 1,199
MGS: Top Acres C Wonderment ET *TM
MGD: Front Line Pronto Bounty ET "EX-90"
 3-02 365d 2x 32,110 4.2 1,335 3.5 1,110



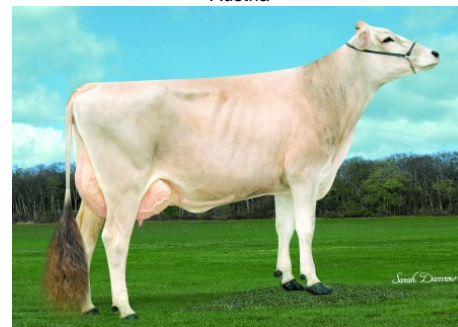
54BS509 CADENCE



HF Cadence Aspen- 3rd Lactation
 1st Sr-3-Year-Old Minnesota State Fair 2017



Cadence Mitzl
 Udder Champion Night Grand Prix Vorarlberg,
 Austria



Hilltop Acres Cadence Paula

NEW GENERATION GENETICS

www.brownswiss.com

(920) 568-0554

E-mail: info@brownswiss.com

54BS509 Shiloh Brookings

CADENCE ET *TM

71130650 aAa: 156 Beta Cas: A1A2 Kappa Casein: BB
Born: 1/15/2012

MATING RECOMMENDATIONS

TOP MATING CHOICE FOR PPR

1. Kade *NP
2. Lucky Carl
3. Dario

TOP MATING CHOICE FOR TYPE

1. Winning Formula
2. Richard
3. Davenport

NEW GENERATION GENETICS

www.brownswiss.com

(920) 568-0554

E-mail: info@brownswiss.com