

54BS509 Shiloh Brookings

CADENCE ET *TM

71130650 aAa: 156 Beta Cas: A1A2 Kappa Casein: BB
 Born: 1/15/2012

Proven Sires, Preferred Sex

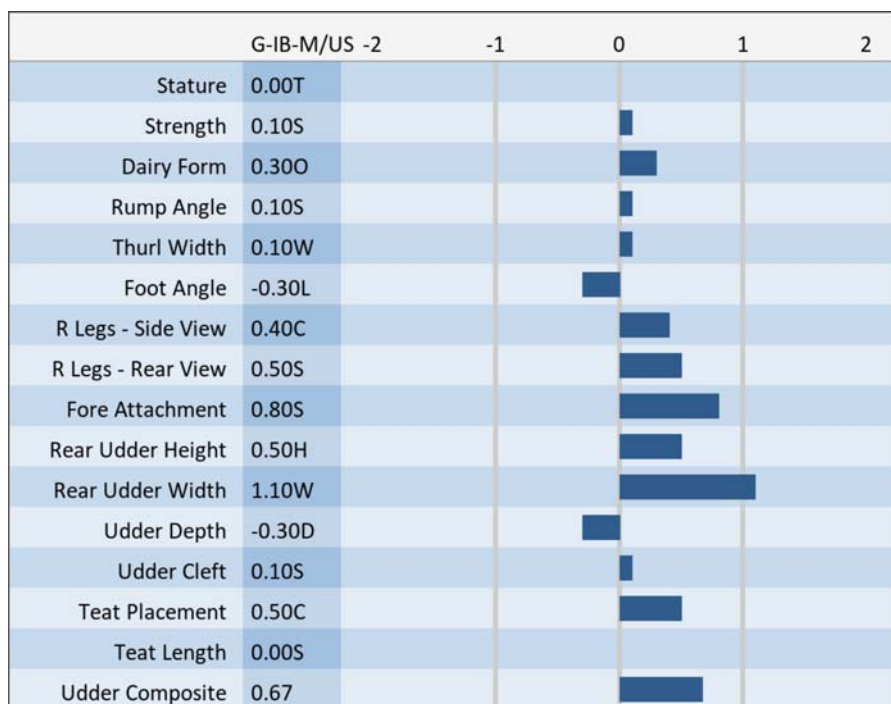
#3 TYPE (tied) & #4 SCR

BROOKINGS X WONDERMENT X ALTAPRONTO

08/2020 G-IB-M/US PERFORMANCE			
MILK +688	FAT +26 / -0.01%	PROTEIN +27 / +0.02%	PPR 87
PROD. 99%R 2099 DTRS/1027 HRDS TYPE 98%R			
PL +1.8	UDC +0.67	SCS 2.84	TYPE +0.70
Milking Speed 108		Conception (SCR) 2.2	
Cow Livability -1.7			
CE 2.2%	NM\$ \$216	DPR -1.8	MOB +0.1

MATING GUIDE	
+ Fore Udder	
+ Rear Udder Height & Width	
+ Udder Deth & Cleft	
+ Show Style	
Rear Legs- Some Set & Rump Angle- Slope	

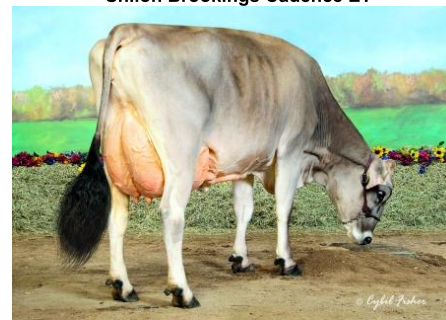
Sire: R N R Payoff Brookings ET *TM
Dam: Sun-Made SD Wonder Buffy ET "VG-88"
 4-03 279d 3x 35,470 3.9 1,369 3.4 1,199
MGS: Top Acres C Wonderment ET *TM
MGD: Front Line Pronto Bounty ET "EX-90"
 3-02 365d 2x 32,110 4.2 1,335 3.5 1,110



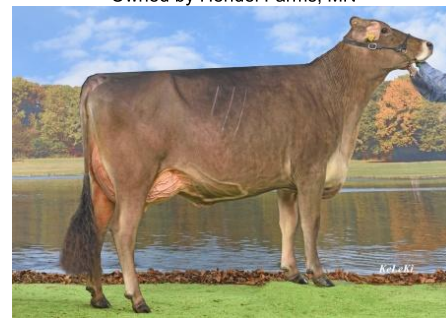
Twinkle-Hill Cadence Olivea 1233
 Reserve All American Jr. 2 Year Old 2019
 2nd Jr-2-Yr-Old World Dairy Expo 2019
 Owned by Twinkle-Hill Farm, WI



Shiloh Brookings Cadence ET



HF Cadence Aspen-3rd Lactation
 1st Sr-3-Year-Old Minnesota State Fair 2017
 Owned by Hendel Farms, MN



Cadence Mitzl
 Udder Champion Night Grand Prix Vorarlberg,
 Austria

NEW GENERATION GENETICS

www.brownswiss.com

(920) 568-0554

E-mail: info@brownswiss.com