

54BS539 Jo-Dee Nemo

RICHARD ET *TM

68155420 aAa: 453 Beta Cas: A1A2 Kappa Casein: BB
Born: 6/10/2013

Proven Sires, Preferred Sex, Champions Collection
NEMO x ENSIGN x BANKER

08/2020 G-CDCB PERFORMANCE			
MILK +1032	FAT +1 / -0.17%	PROTEIN +12 / -0.09%	PPR 33
PROD. 98%R 614 DTRS/240 HRDS TYPE 97%R			
PL +0.5	UDC +0.75	SCS 3.02	TYPE +0.50
Milking Speed 105		Conception (SCR) -0.5	
Cow Livability -1.1			
CE 3.5%	NM\$ \$9	DPR -0.9	MOB +0.4

MATING GUIDE

- + Size & Dairy Strength
- + Fore Udder
- + Udder Depth & Cleft
- + Rear Udder Height & Width

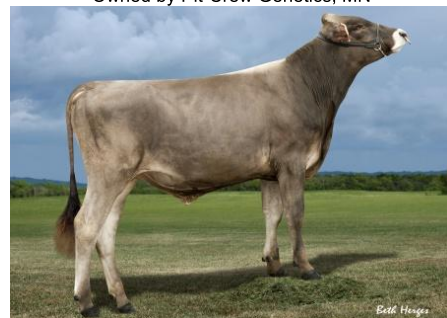
Rear Legs- Ideal & Rump Angle- Level

Sire: Jo-Dee Prelude Nemo ET *TM
Dam: Jo-Dee Ensign Rosebud "2E-93 EX-92 MS"
5-11 365d 2x 30280 3.6 1085 3.3 988
All American 2013 & 2x HM All American, 5x Nominated All American
MGS: R Hart Simon Ensign ET
MGD: Jo-Dee Banker Rose "2E-92 EX-92 MS"
Lifetime: 2194d 182680m 7613f 6407p
Nominated All American 2009

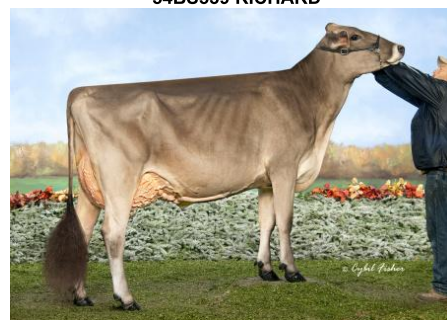
	G-CDCB	-2	-1	0	1	2
Stature	0.60T					
Strength	0.90S					
Dairy Form	-0.10T					
Rump Angle	-0.50H					
Thurl Width	1.70W					
Foot Angle	0.30S					
R Legs - Side View	-0.70S					
R Legs - Rear View	0.50S					
Fore Attachment	0.80S					
Rear Udder Height	1.70H					
Rear Udder Width	0.90W					
Udder Depth	0.50S					
Udder Cleft	0.50S					
Teat Placement	-1.60W					
Teat Length	1.50L					
Udder Composite	0.75					



Pit-Crew Richard Pizza (2nd Lact.)
Reserve All American Jr. 3 Year Old 2019
2nd Jr-3-Yr-Old World Dairy Expo 2019
Grand Champion Minnesota State Fair 2019
Owned by Pit-Crew Genetics, MN



54BS539 RICHARD



Giesy Manor Richard Fauna (2nd Lact.)
Honorable Mention All American Jr. 3 Year Old 2019
3rd Jr.-3-Yr-Old World Dairy Expo 2019
Owned by Edge-View Genetics, NY & KY



On-A-Whim Richard Porsche Et (3rd Lact.)
Nominated All American Sr. 3 Year Old 2019
4th Sr.-3-Yr-Old World Dairy Expo 2019
Res. Intermediate Champion Junior Show World Dairy Expo 2019
Owned by Katie Larmon, NY

NEW GENERATION GENETICS

www.brownswiss.com
(920) 568-0554
E-mail: info@brownswiss.com