

54BS517 Cozy Nook Driver

TONKA *TM

68139913 aAa: 531 Beta Cas: A1A2 Kappa Casein: BB
Born: 3/1/2012

Proven Sires

DRIVER x JOEL x PRONTO

08/2020 G-CDCB PERFORMANCE			
MILK +310	FAT +27 / +0.06%	PROTEIN +11 / 0.00%	PPR 82
PROD. 92%R 115 DTRS/52 HRDS TYPE 84%R			
PL +2.8	UDC -0.06	SCS 2.93	TYPE -0.20
Milking Speed 109		Conception (SCR) N/A	
Cow Livability +3.1			
CE 2.8%	NM\$ \$259	DPR +1.4	MOB -0.4

MATING GUIDE

+ Strength & Power + Udder Cleft & Depth + Feet & Legs	- Pin Width
Rear Legs- Ideal & Rump Angle- Level	

Sire: Hilltop Acres H Driver ET *TM
Dam: Cozy Nook Joel Tipper ET "VG-89"
 5-02 322d 2x 28,920 4.2 1,211 3.7 1,056
MGS: Red Brae Daa Ace Joel *TM
MGD: Cozy Nook Pronto Twilight "4E-92"
 4-01 365d 2x 39,680 4.0 1,569 3.3 1,303

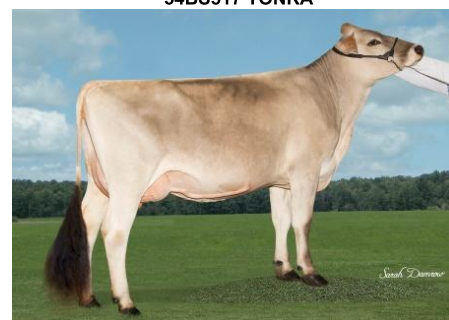
	G-CDCB	-2	-1	0	1	2
Stature	-0.60S					
Strength	0.60S					
Dairy Form	-0.10T					
Rump Angle	0.10S					
Thurl Width	-0.40N					
Foot Angle	0.10S					
R Legs - Side View	0.20C					
R Legs - Rear View	-0.40H					
Fore Attachment	-0.70L					
Rear Udder Height	-0.40L					
Rear Udder Width	-0.40N					
Udder Depth	-0.10D					
Udder Cleft	1.00S					
Teat Placement	0.90C					
Teat Length	0.80L					
Udder Composite	-0.06					



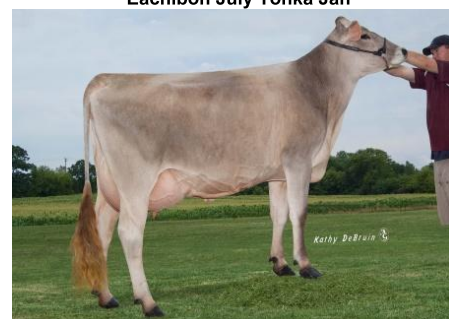
Cozy Nook Tonka Abbralee



54BS517 TONKA



Eachibon July Tonka Jan



Dam: Cozy Nook Joel Tipper ET 'VG 89'

NEW GENERATION GENETICS

www.brownswiss.com

(920) 568-0554

E-mail: info@brownswiss.com